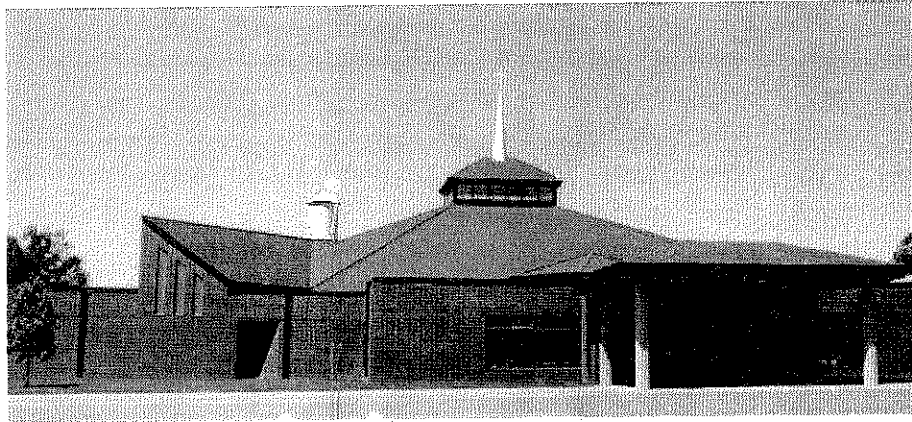




Church of Saint Andrew



One of the great gifts in our parish is the spirit of generosity demonstrated in countless ways by members offering their time, talents and financial treasures for the good of others. The idea of serving beyond oneself is manifested through support of our worship, education, fellowship and outreach ministries as well as local, national and international projects.

We know first hand that when we offer a commitment to a person, to a family, or to our community of faith, the depth of our giving is directly related to the depth of our connection. Deepest giving requires prayerful reflection on our blessings, a desire to provide for the needs of others, and our capacity to respond with our gifts.

Every day we thank God for the love and support that comes from so many generous and dedicated parishioners. We are confident that with many hands working together, the spirit that has sustained us for 120 years will continue to enable our parish to be a beacon of faith and light for all. Thank you for being a faithful and supportive member of our Catholic community!

Fr. Joe Korf
Pastor

David Badger
Parish Trustee

Donna Dohmen
Parish Trustee

SECURING OUR FUTURE

July 1, 2011 – June 30, 2014 CAPITAL CAMPAIGN

Two years ago, in light of the serious economic downturn, and after discussion and prayer, parish leaders, including our trustees, Pastoral Council, Finance Committee, and pastor postponed the launch of a parish-wide capital campaign to reduce the remaining facilities debt.

During that time, as we awaited signs of a more improving economy, we asked those parishioners with the financial capacity, to continue offering their financial support, since the required monthly loan payment would need funding every month. We want to thank those who helped us maintain our payment schedule through their ongoing support. We also value the prayers offered for St. Andrew's Parish.

Now, with a renewed energy, we are ready to resume our capital campaign invitation in late March and early April. The campaign objectives will be to service the debt over the next three years, to reduce a portion of the remaining mortgage principal, to create a facility repair and improvement fund, and to start a seed fund dedicated for a future phase of our building master plan.

All registered parishioners will be invited to offer a new 36-month Financial commitment, above and beyond regular weekly support for parish operations and fees for our Catholic education programs.

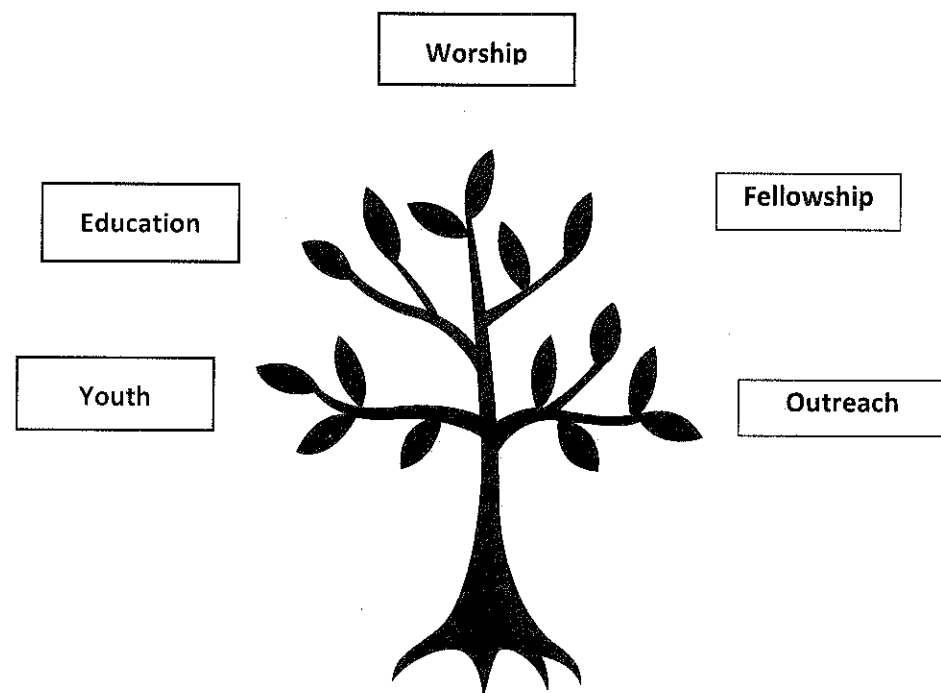
CAPITAL CAMPAIGN OBJECTIVES

1. Fund monthly mortgage/interest payments and reduce the remaining mortgage principal.	\$800,000
2. Create a facility repair and improvement fund.	\$350,000
3. Start a seed fund for a future building project.	<u>\$350,000</u>
Total Financial Goal	\$1,500,000

Our Parish Mission Statement

"We are a growing sacramental community, rooted in the true presence of Christ through the sacrifice of Holy Eucharistic feast. Guided by the teachings of the Roman Catholic Church, we strive to live our faith as revealed through the Holy Scriptures and Apostolic Traditions.

Our mission is to utilize our time, talents and treasures to educate and serve all generations with respect and generosity. We cast our net in hopeful anticipation of welcoming all people to the Body of Christ."



**Supported Through Our Stewardship Gifts
Time...Talents...Treasures**

Our Faith Community

Our parish includes 2,130 registered households – 6,718 members

- 4% of our members are under school age (0-4 years old)
- 10% are of elementary school age (5-9 years old)
- 10% are middle or junior high school age (10-14 years old)
- 10% are high school age (15-19 years old)
- 9% are college age (20-24 years old)
- 7% are in their young adult working years (25-34 years old)
- 37% are in their prime working years (35-59 years old)
- 13% are semiretired or retired seniors (60 years or older)

From July 1, 2009 to June 30, 2010 sacramental activity included:

- † 45 Infants baptized into our parish
- † 114 Children in First Reconciliation and First Eucharist
- † 71 Young adults confirmed
- † 8 Adults initiated through the RCIA program
- † 20 Couples celebrated marriage
- † 30 Funerals were celebrated

Some additional facts about our parish ministries.

- ◆ 150 families have 212 children in our St. Andrew Catholic School.
- ◆ Over 750 students in all of our Faith Formation/Youth programs.
- ◆ Membership records indicate that majority of parishioners live in Elk River, and 20 different zip codes outside the area.
- ◆ In the past year approximately 1,200 parish members offered their Time/Talents in nearly 30 ministries.
- ◆ Outside of Sunday worship, in an average week, hundreds of children, youth, adults, seniors, and visitors use our facilities. These include: grade school students/parents, various choirs, Faith Formation classes, Sunday School, Vacation Bible School, Youth Ministry classes/groups, Bible Study groups, weddings, funerals, elections, KC's, Secular Franciscans, Social Justice, Boy Scouts, Girl Scouts, the Annual Festival, and many more groups.
- ◆ In the past three years, we registered 253 new parish households.

Parish Operating Budget Summary

Fiscal Years Ending June 30, 2009, 2010 and Budgeted for 2011

	Actual 2008-2009	Actual 2009-2010	Budget 2010-2011
Income			
Ordinary Income	\$906,448.41	\$899,999.16	\$916,883.00
Extraordinary and Other	\$132,766.18	\$153,758.43	\$120,200.00
Faith Formation/Youth Ministry	\$90,122.49	\$81,642.97	\$81,350.00
Saint Andrew Catholic School	\$943,427.96	\$841,722.48	\$804,619.00
Total Income	\$2,072,765.04	\$1,977,123.04	\$1,923,052.00
Expenses			
Parish and School Staffing	\$1,461,499.40	\$1,477,190.98	\$1,454,584.00
Diocesan Dues and Assessments	\$70,466.00	\$73,618.00	\$77,000.00
Utilities	\$86,086.57	\$81,581.72	\$89,200.00
General/Liturgy/Pastoral	\$209,123.99	\$205,340.92	\$184,257.00
Faith Formation/Youth Ministry	\$52,779.36	\$39,315.19	\$46,645.00
Additional School Expense	\$123,869.49	\$122,608.57	\$124,265.00
Parking Lot Repair	\$23,380.00		
Total Expenses	\$2,027,204.81	\$1,999,655.38	\$1,975,951.00
Net Income (Loss)	\$45,560.23	(\$22,532.34)	(\$52,899.00)

So That Our Story May Endure...

The Church of Saint Andrew is an assembly of people who know the story of our Lord and Savior, Jesus Christ. The story is alive and present in our lives.

As a community of faith, we believe our full participation in membership, with all its rights and privileges, is essential for the story to endure.

Together, we celebrate the story and share in its meaning.

For the story of Jesus and the story of our faith community to continue to impact and empower our lives and the lives of others – one more time we are now called to act in faith.

We are called to recommit our spiritual prayers, mental energy, physical talents, and financial gifts, so that together, the story of our faith community may endure for current and future generations.

"As each one has received a gift, use it to serve one another as good stewards of God's varied grace." 1 Peter 4:10

Chronology of Previous Capital Campaign Activity

The following information is the most complete data we have based on records.

- 2003 – 2005 “GROWING TO THE FUTURE” Capital Campaign
(Built Parish Center/Gymnasium, Cafeteria,
Kitchen space, and connection to the current Church)
- \$2,500,000 total campaign goal
 - \$1,649,877 commitments raised or 66% of goal
 - 2,059 registered households as of (1/1/2003)
 - 650 participants or 32% of all households
- 2006 – 2008 “MOVING FORWARD IN FAITH I” Capital Campaign
(Debt Service/Retirement, Diocesan Commitment)
- \$2,150,000 total campaign goal
 - \$1,585,596 commitments raised or 74% of goal
 - 2,110 registered households as of (1/1/2006)
 - 735 participants or 35% of all households
- 2009 – 2011 “MOVING FORWARD IN FAITH II” Capital Campaign
(Debt Service/Retirement)
- \$2,500,000 initial campaign goal
 - \$576,000 revised campaign goal (due to economic downturn)
 - \$390,345 commitments raised or 68% of goal
 - 2,125 registered households as of (7/1/2009)
 - 430 participants or 20% of all households

Why an Operating Fund and a Capital Campaign?

When we share our financial treasures on a weekly, monthly, or annual basis through the regular collection at each Mass, we term this revenue source our annual operating fund (stewardship of treasure).

The income derived from our regular contributions provides ongoing support for the day-to-day operation of our parish ministries and programs.

These sacrificial gifts are given, most often, from individual and/or family annual income, not necessarily household assets. To accomplish all that we provide by way of ministry and service during the church fiscal year from July 1 through the following June 30, we need your continued generosity.

When it comes to addressing issues that are outside the scope of our day-to-day operations, for example to service/retire our facilities mortgage, we must create an additional revenue source to fund these non-operating needs.

Historically, the most conventional approach for a parish like ours is to conduct a multi-year capital campaign to provide funding for debt service/retirement, and initiatives that are outside the scope of the parish operating budget.

Mortgage Summary – As of February 4, 2011

Commercial Financing

• Mortgage Balance	\$1,962,241.00
• Current Interest Rate	3.43%
• Maturity Date	2025
• Monthly Principal Payment	\$11,275.20
• Monthly Interest Payment	<u>\$ 4,700.80</u>
• Total monthly principal/interest payments	\$15,976.00

Benefits of Reducing/Retiring Our Facilities Debt

- Since 2005 our parish has spent \$547,804 on mortgage interest.
- By paying off our loan principal at a faster rate, we can save additional interest expense that will enable us to focus our energies on providing resources for ministry and NOT servicing our mortgage.
- Our loan applications indicated that we would conduct capital campaigns to complete the loan payments.
- The parish operating budget cannot cover the annual cost of principal and interest payments without adversely affecting ministries and services.
- We do not anticipate any special contributions to cover our mortgage payments.
- Unlike a homeowner, the Church of Saint Andrew cannot deduct mortgage interest expenses. Because our parish is a non-profit, tax-exempt organization, paying interest provides us with no tax advantage.

Proposed Solution

We are Blessed by Your Presence and Participation

The Church of Saint Andrew is truly blessed by your presence and active participation. In gratitude we give thanks for **all you do** by way of providing your talents and financial treasures for the good of our entire parish.

Creating a Brighter Future for Our Faith Community

Fiscal responsibility and forward thinking, two characteristics of a healthy parish, helped guide our proposal to initiate the invitation for your financial support over the next 3-4 months.

“Securing Our Future” Capital Campaign

- The capital campaign invitation will encourage every registered household to offer a new 36-month financial commitment for debt service/reduction, a modest repair and improvement fund, and a seed fund for a future building project.
- The commitment pledge term will be from July 1, 2011 through June 30, 2014.
- The commitment should be above and beyond what you contribute weekly or monthly to support the annual operating budget of our parish ministries.
- Our financial objective will be to raise \$1,500,000 over the next 36-months.

Our Treasured Spiritual Home

We know that our parish is no more defined by buildings than a family is defined by a home. Yet both need a place to live that is welcoming, safe, and comfortable; a place where the light of home can shine. Here in that light, wonderful things can happen, as they have happened in Saint Andrew Catholic Church for the past 120 years.

As every homeowner understands, it is essential that we provide the space needed to shelter our family and the ministries to feed the soul of those who consider this their spiritual home. Now, at this important moment in our history, we need to work together to find the financial resources to service/reduce our mortgage, care for and maintain what we have worked hard to build, and responsibly plan for the future. This is an ambitious plan. Reaching it requires three things:

- ❖ **Participation.** Our parish belongs to each of us, therefore every registered household will be invited to offer a financial commitment based on financial ability.
- ❖ **Sacrifice.** We are sacrificing today to create a brighter future for our parish tomorrow.
- ❖ **Hope.** We must be hopeful that even through this economic uncertainty we can reach our goal and do our part to achieve it.

Our Prayer In Gratitude

Gracious God and creator of the universe we, the people of Saint Andrew Catholic Church, are grateful for all the blessings you have given us as a family of faith. We are thankful to all who have gone before us, who built our parish facilities. We recognize that we are the stewards of this legacy. We pray in thanksgiving for all we have been given. We ask for your guidance in realizing our own obligations and opportunities, in building up our faith-filled community. As we work together, remind us that our mission is centered in Jesus Christ and bringing the good news of salvation to the world. We pray this in Jesus' name. Amen.

Guiding Principles For Our Capital Campaign

1. Our invitation for financial support will be well organized, dignified, respectful and confidential. **No one will be assessed or told what to contribute.** The process will be based on invitation, not pressure.
2. All financial commitments and contributions, regardless of size, are welcome and appreciated.
3. Commitments and contributions for the capital campaign must be above and beyond regular weekly or monthly support for the annual operating budget.
4. All commitments will be acknowledged with a thank you note.
5. Financial commitments are not legally binding, but rather a moral commitment to our parish. Should your circumstances change and you need to adjust your commitment, you should contact the pastor to arrange an adjustment.
6. Since the Church of Saint Andrew is a non-profit 501(c)(3) charitable organization, all contributions are tax-deductible based on current Federal and State laws.
7. Following IRS guidelines, all contributions of \$250 or more will be acknowledged with a letter of receipt for the donor's tax records.
8. Contributions to the capital campaign will be recorded in your household confidential contribution record and acknowledged quarterly, and at the conclusion of each calendar year in your annual tax summary.
9. In an effort to stimulate a higher percentage of pledge collections, periodic reminders will be mailed to those households who have pledged and have a remaining balance.